

## **Desktop Central LAN Architecture**

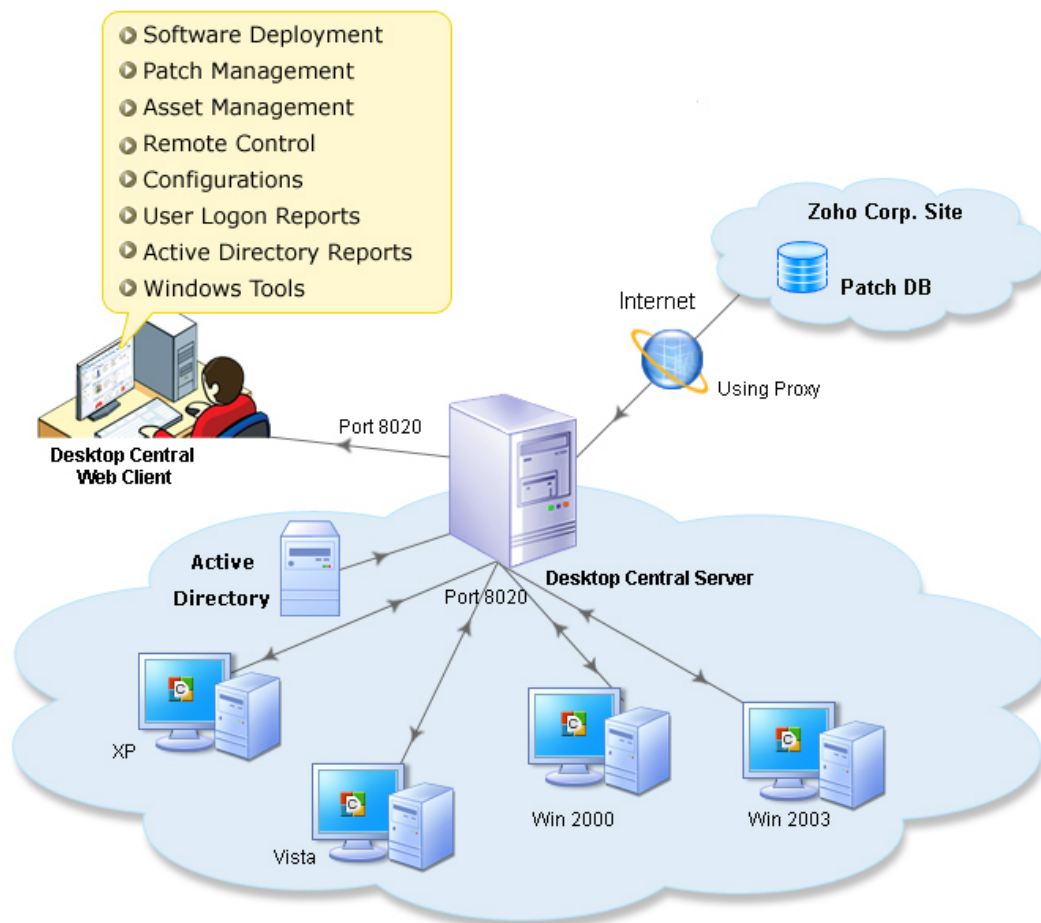
# Desktop Central Architecture

## Overview

ManageEngine Desktop Central is Web-Based windows desktop administration software that helps administrators to effectively manage the desktops from a central point. It provides Software Deployment, Patch Management, Service Pack Installation, Asset Management, Remote Control, Configurations, System Tools, Active Directory Reports and User Logon Reports.

The figure below depicts the Desktop Central Architecture. The details of the individual components are given below:

### Desktop Central LAN Architecture



# Desktop Central Architecture

## Server Component

Desktop Central Server is located at the enterprise (customer site) is responsible for performing various Desktop Management activities. It pushes the Desktop Central agent to the client machines, deploys configurations, initiates scanning for Inventory and Patch Management, and generates reports of the Active Directory Infrastructure Components to effectively manage the desktops in the enterprise network. It is advised to keep the Desktop Central server always running to carry out the day-to-day Desktop Management activities. All these actions can be initiated from a web-based administration console in a few simple clicks.

## Agent Component

Desktop Central Agent is light-weight software that gets installed in the client systems that are being managed using Desktop Central. It acts as a worker to carry out the operations as instructed by the Desktop Central Server. It is also responsible for updating the Desktop Central Server with the status of the deployed configurations. The agent periodically pulls the instructions from the Desktop Central Server and executes the tasks. The agent contacts the server at the following intervals:

1. For user-specific configurations - during user logon and every 90 minutes thereafter till the user logs out of the computer.
2. For computer-specific configurations - during system startup and every 90 minutes thereafter till the system is shutdown.

## Patch Database

The Patch Database is a portal in the ManageEngine site, which hosts the latest vulnerability database that has been published after a thorough testing. The Desktop Central Server periodically synchronizes this information and scans the systems in the enterprise site to determine the missing patches. Subsequently, the patches are installed to fix the vulnerabilities.

# Desktop Central Architecture

The communication between the Desktop Central Server and the Patch Database is through the Proxy Server or a direct connection to internet. The required patches will be downloaded from Microsoft website and stored locally in the Desktop Central Server before deploying the patches to the client computers. Hence, each client computer (agent) will take the patch binaries from the Desktop Central Server

## Web Console

- ❖ Provides a central control point for all the desktop management functions.
- ❖ Can be accessed from anywhere: LAN, Remote Offices, and Home through Internet/VPN.
- ❖ No separate client installations are required.

## Active Directory

For Active Directory based Domain setup, the Desktop Central Server queries the Active Directory to generate out-of-the-box reports for Sites, Domains, Organization Units, Groups, Computers, etc., which gives you a complete visibility into the Active Directory.

## Ports Used by Desktop Central

No specific ports need to be opened on the Agent side. On the Server, you need to open the following TCP ports:

1. 8020 - Used for Agent-Server communication and for accessing the Web interface.
2. 8443 – Used for Remote Control.
3. 8443 – Used for Remote Control (Secure Mode)
4. 8444 – Used for Remote Control
5. 8031 – Used for File Transfer (Secure Mode)
6. 8032 – Used for File Transfer